

# Actuated Butterfly and Ball Valve Manual Override



## General

- **Actuator:** Electric, pneumatic
- **Butterfly Valve Size:** 2"–8"
- **Ball Valve Size:** 2½"–4"
- **Coupling Material:** Stainless steel
- **Lever Material:** Steel
- **Adapter Coating:** Nickel plated steel
- **Hardware:** Inclusive
- **Hardware Material:** Stainless steel
- **Mounting:** ISO 5211
- **Standard Pack Quantity:** 1 piece

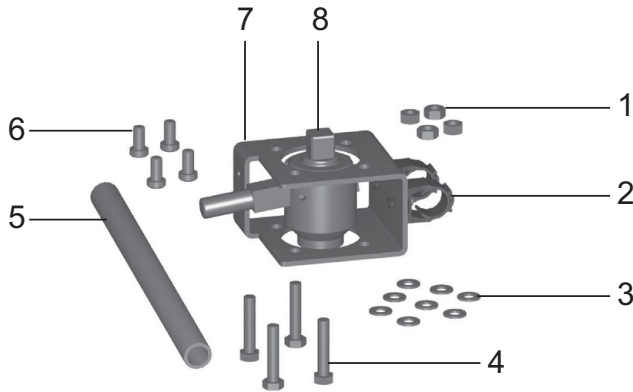
## Standard Assemblies

Of the valve types detailed in this document as compatible with the manual override, only the electrically actuated ball valve family offers standard assemblies that include the manual override, however one can be added as an accessory to all other listed standard assembly types.

## Sample Specification

GF's Actuated Butterfly and Ball Valve Manual Override shall be declutchable in design and utilized with a butterfly or ball valve assembly with a 90 degree stroke. The adapter assembly shall utilize two drives, one male drive shall adapt to the actuator and one female drive shall adapt to the valve. The adapter handle attachment shall declutch the two drives when an operator applies pressure to the handle allowing for the manual override function. Required hardware for mounting to a GF valve and actuator shall be inclusive. The handle shall not be mechanically joined to the adapter while in service and secured in provided clips while not in service. All manual overrides shall be manufactured under ISO9001 for Quality and ISO14001 for Environmental Management.

## Components



## Components

Part	Description	Material
1	Valve side nuts	304 Stainless steel
2	Handle clips	PP
3	Valve side washers	304 Stainless steel
4	Valve side bolts	304 Stainless steel
5	Handle	Epoxy coated steel
6	Actuator side bolts	304 Stainless steel
7	Housing	Epoxy coated steel
8	Adapter	Nickel plated steel



## Compatibility

### Butterfly Valves

Size (inch)	Type	Action	Actuator	Part Number	Female (mm)	Male (mm)
2	PA	FC/FO	PA30	198000630	11	11
2½	PA	FC/FO	PA30	198000630	11	11
3	PA	FC/FO	PA35	198000631	11	14
4	PA	FC/FO	PA40	198000628	14	14
5	PA	FC/FO	PA45	198000629	14	17
6	PA	FC/FO	PA50	198000625	17	17
8	PA	FC/FO	PA55	198000627	17	22
2	PA	DA	PA35	198000630	11	11
2½	PA	DA	PA35	198000630	11	11
3	PA	DA	PA40	198000630	11	11
4	PA	DA	PA45	198000628	14	14
5	PA	DA	PA45	198000628	14	14
6	PA	DA	PA55	198000625	17	17
8	PA	DA	PA55	198000625	17	17
2	EA	-	EA120	198000623	11	17
2½	EA	-	EA120	198000623	11	17
3	EA	-	EA120	198000623	11	17
4	EA	-	EA120	198000624	14	17
5	EA	-	EA120	198000624	14	17
6	EA	-	EA120	198000625	17	17
8	EA	-	EA250	198000627	17	22

### Ball Valves

Size (inch)	Type	Action	Actuator	Part Number	Female (mm)	Male (mm)
2½	PA	FC/FO	PA30	198000630	11	11
3	PA	FC/FO	PA40	198000631	11	14
4	PA	FC/FO	PA40	198000628	14	14
2½	PA	DA	PA35	198000630	11	11
3	PA	DA	PA40	198000630	11	11
4	PA	DA	PA45	198000628	14	14
2½	EA	-	EA120	198000623	11	17
3	EA	-	EA120	198000623	11	17
4	EA	-	EA120	198000624	14	17

