

Local Control Box LCB 201, 202



General

- **Size:** 6" x 6"
- **Material:** Fiberglass reinforced polyester
- **Hardware:** Stainless steel
- **Gasket:** Polyurethane
- **Voltage:** 110VAC, 24VDC
- **Position Indicator:** Green lamp (open), red lamp (closed)
- **Operator Selector:** Three position switch (manual, off, auto)
- **Position Selector:** Three position switch (open, off, closed)
- **Connection:** Cable gland
- **Mounting Tabs:** Integrated
- **Ground Connection:** Integrated

Optional Features

- **Connection:** Conduit
- **Material:** Alternatives available upon request
- **Protection Class:** Alternatives available upon request
- **Voltage:** 220VAC
- **Gasket:** Alternatives available upon request
- **Made-to-Order:** Custom enclosures available upon request

Key Certifications

- NEMA 4
- UL

Sample Specification

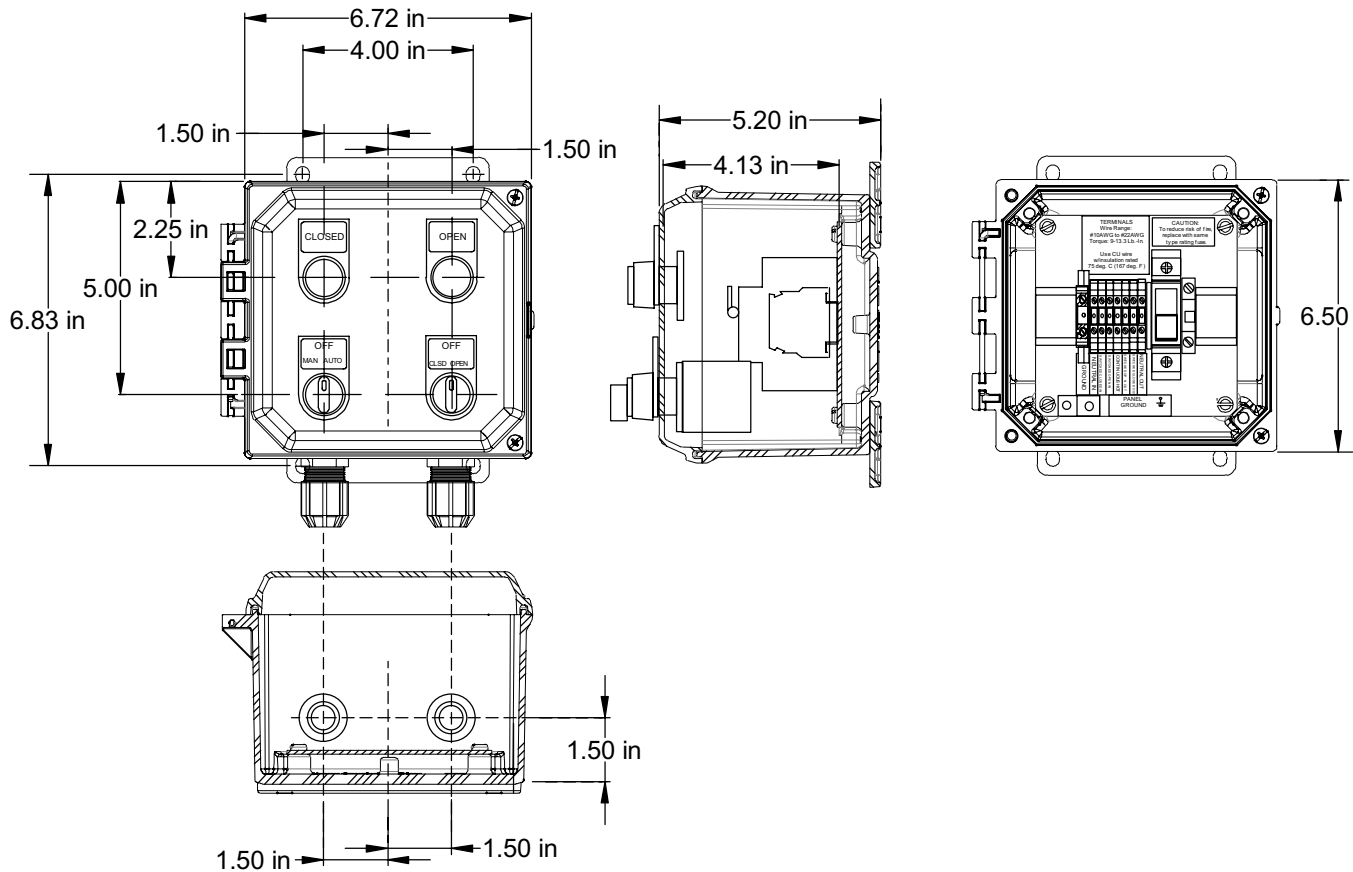
The Local Control Box (LCB) shall allow for the local control of an electrically actuated valve, including the local shut-off of remote command, local operation of the actuator and complete command stopping abilities. The control signalization shall be of open/close style four wire logic. Dual panel mounted lamps shall indicate either Open or Closed positioning during both remote and local operation. The enclosure shall be of NEMA 4 protection class, sealed with a gasket barrier and be of a mountable design. The lamps and three position switches indications shall be clearly marked and laser engraved. The standard assembly shall accommodate the control of a single valve.

Definition of Type

- **LCB 201:** 110VAC
- **LCB 202:** 24VDC

Dimensions

All following dimensions are shown in inches unless otherwise noted.



Wiring

