

COLORO Ball Valves Type 353/355



General

- **Size:** ½"–2"
- **Material:** PVC
- **End Connection:** Socket, threaded
- **Seat:** PTFE
- **Seals:** EPDM
- **Handle Color:** Orange

Optional Features

- **Handle Color:** Green, yellow, black, white, blue, red

Key Certifications

- **FDA CFR 21 177.2600:** EPDM
- **FDA CFR 21 177.1550:** PTFE
- **American Bureau of Shipping (ABS):** All materials

Connection Availability

- Type 353 COLORO Compact Ball Valve - Socket only
- Type 355 COLORO True Union Ball Valve - Socket, threaded

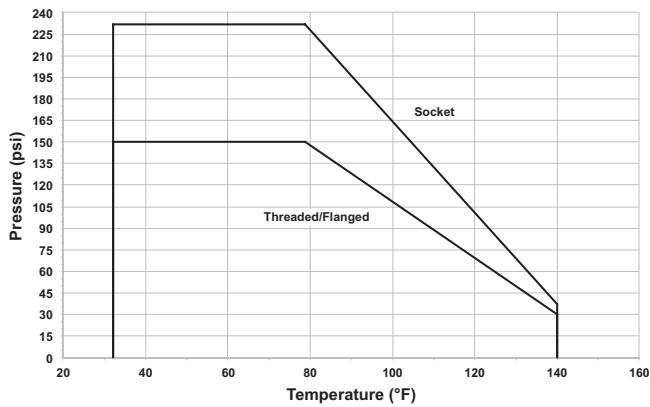
Sample Specification

The Type 353 and 355 COLORO Ball Valve body shall utilize a non-serviceable compact design and shall be used for open close applications only. The valve body material shall be fully molded PVC and the elastomeric seals shall be EPDM. True union and compact versions shall be available. True union versions shall utilize GF union ends, nuts and face seals. The ball shall have two way blocking capability. The ball and stem shall be fully molded one piece design and shall be encased between two IR fused body halves. The seat shall be PTFE with an EPDM backing ring. All elastomeric seals shall be of like material. The handle shall be interchangeable and be available in multiple colors. All valves shall be tested in accordance to ISO9393 and Type 355 valves shall be designed to ISO16135 standards. All valves shall be manufactured under ISO9001 for Quality and ISO14001 for Environmental Management. Following assembly, every valve shall be tested and certified bubble tight exceeding Class VI standards. PVC valves shall meet ASTM D1784 cell classification 12454 standards and shall be RoHS compliant.

Technical Data

The following graphs are based on a 25 year lifetime water or similar media application

Pressure Temperature Curve



Cv Value

Size (inch)	Cv (gal/min)
3/8	5
1/2	13
3/4	25
1	49
1 1/4	70
1 1/2	112
2	217

Pressure-Temperature

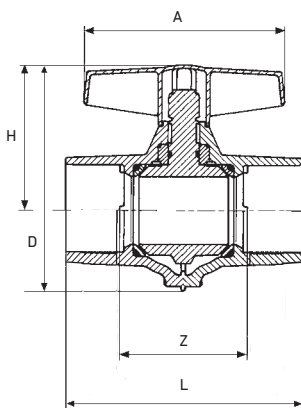
Material	Temperature Range (°F)	Max Pressure (psi)
PVC	32 to 140	232*

*Dependant on end connection as shown in P-T curves

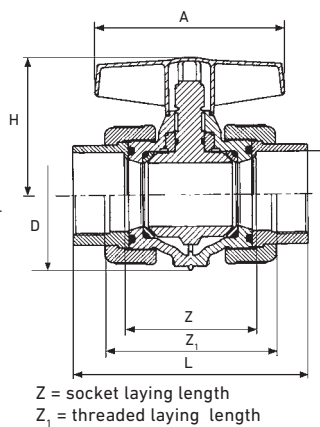
Dimensions

The following tables are shown in millimeters unless otherwise specified

353 Compact



353 True Union



Z = socket laying length
Z₁ = threaded laying length

Size	353/355			353 IPS Socket	
	A	D	H	L	Z
1/2	78	75	51	77	33
3/4	92	85	58	89	38
1	92	94	62	105	47
1 1/4	116	116	76	119	56
1 1/2	116	128	83	136	66
2	140	157	102	160	83

Size	355 IPS Socket		355 Threaded NPT	
	L	Z	L	Z1
1/2	95	60	92	66
3/4	107	66	104	74
1	117	69	113	79
1 1/4	137	80	132	94
1 1/2	145	85	147	109
2	170	97	175	127